

# **GATULINE IN-TENSE**

### **Introduction**

With age, the skin loses its elasticity and firmness. Cell turnover slows down, collagen production decreases. But most drastic is the supporting tissue disorganized leading to slackening skin and deep wrinkles.

A new, concentrated firming and wrinkle smoothing active ingredient, GATULINE IN-TENSE acts on the skin natural lifting properties. By stimulating the fibroblast biomechanical functions, GATULINE IN-TENSE will reorganize the dermis architecture.

GATULINE IN-TENSE is derived from the upper part of the Spilantes Acmella plant (Asterceae family) also known as paracress. Gattefosse harvests the flower buds of this plant in South Africa. When sourcing new plants, Gattefosse puts a strong focus in protecting the environment. Only the floral part of paracress is picked and therefore this allows long-term continual development. The specific extraction process allows the recycling of plant residues which are then used for compost in agriculture. Gattefosse has also selected farmer supported by BEE (Black Economic Empowerment) in an effort to boost and support the local economy in Africa.

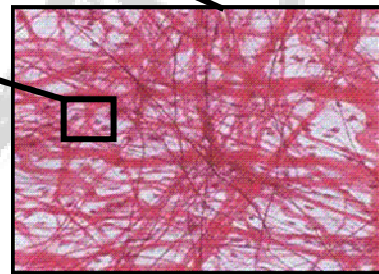
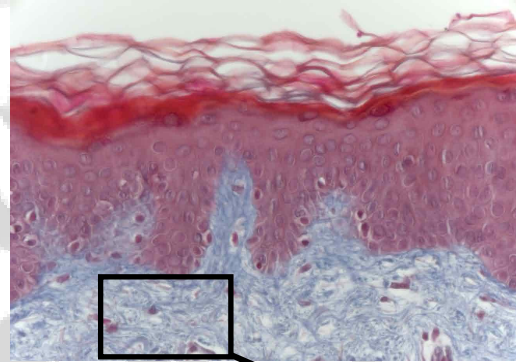
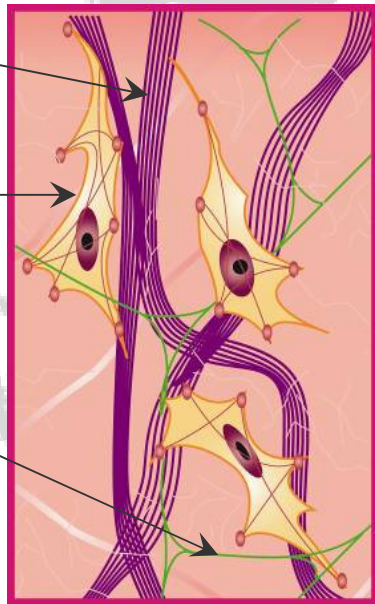
## Properties

The skin structure

**Collage  
n**

**Fibroblast**

**Elastin**



### ▪ **Aging process occurs because :**

- ✿ Decrease of fibroblast fixation
- ✿ Decrease of interaction fibroblasts / ECM
- ✿ Loss of skin firmness
- ✿ Accentuation of wrinkles

### ▪ **Gatuline® In-Tense on the other hand helps :**

- ✿ Stimulate the dynamic properties of fibroblasts

- 🌿 Strengthen and Reorganize the collagen network
- 🌿 Restore skin density / Improve skin firmness

### **In Vitro Efficacy**

Tightening and firming activity has been tested on a living artificial dermis model. The collagen lattices are composed of human fibroblasts interlinking in a network of collagen fibers as within the skin. The effect of GATULINE IN-TENSE on the dynamic properties of the fibroblasts is evaluated by measuring the contraction surface of the lattices.

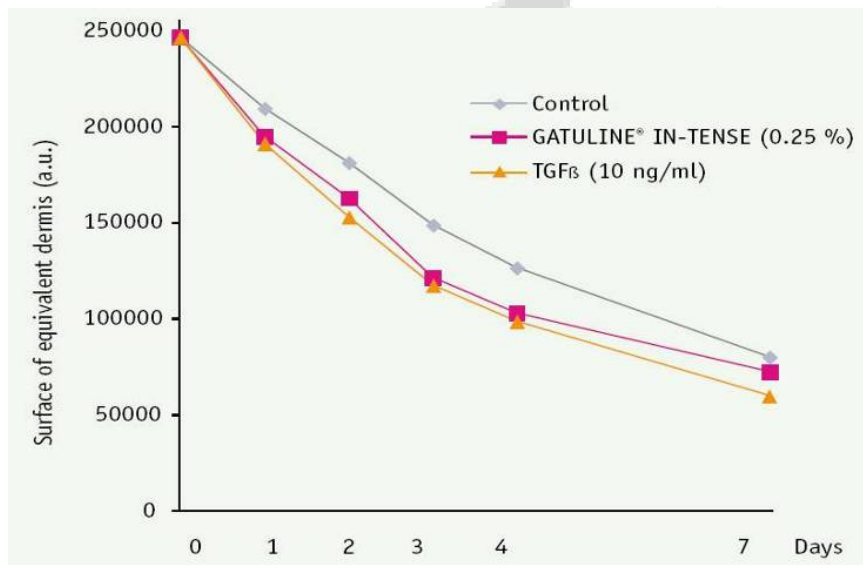


Fig 1 – Contraction kinetics of lattice over 7 days .

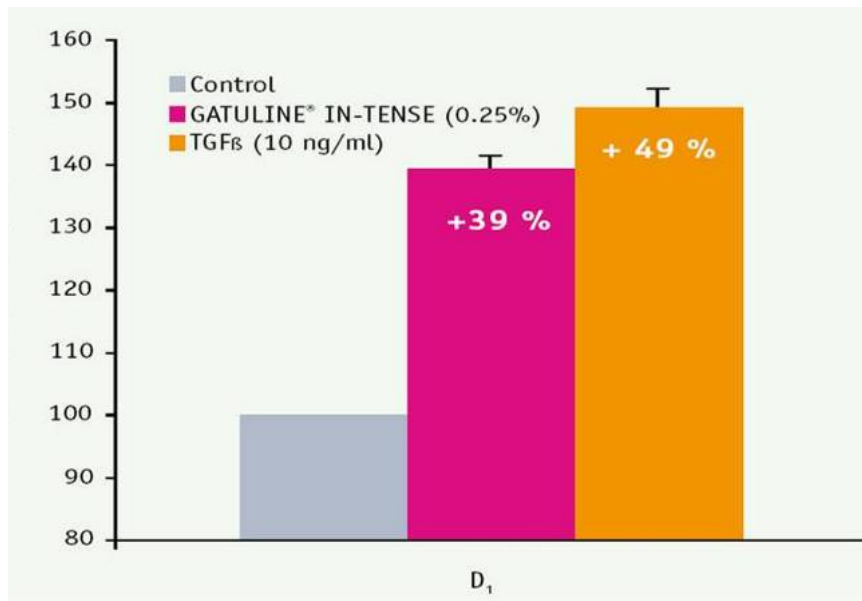


Fig 2 – Lattice contraction : speed at D1

	GATULINE® IN-TENSE			TGFb
	0.025%	0.125%	0.25%	10ng/ml
<b>Stimulation % vs control</b>	<b>+2%</b>	<b>+7%</b>	<b>+12%</b>	<b>+16%</b>

Table 1 – Measure of the equivalent dermis surface at D7

### Clinical Study

- Test
  - 🌿 Evaluation of the effect on crow's foot wrinkles
  - 🌿 2 panels of 28 volunteers (GIT vs Placebo)

- ✿ Twice daily application
- Gatuline® In-Tense
- ✿ Tested at 2% in an O/W emulsion
- Statistical analysis on 100% of the panelists

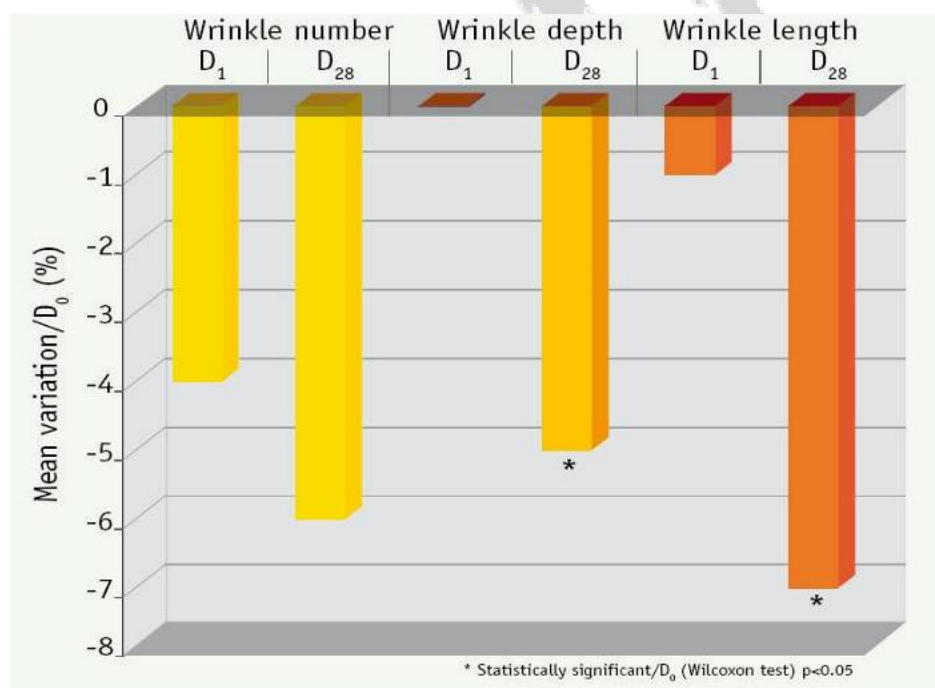
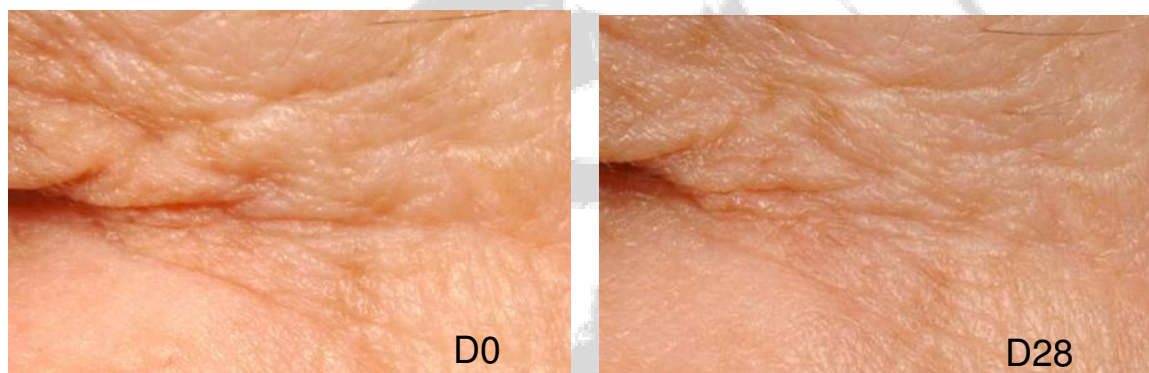
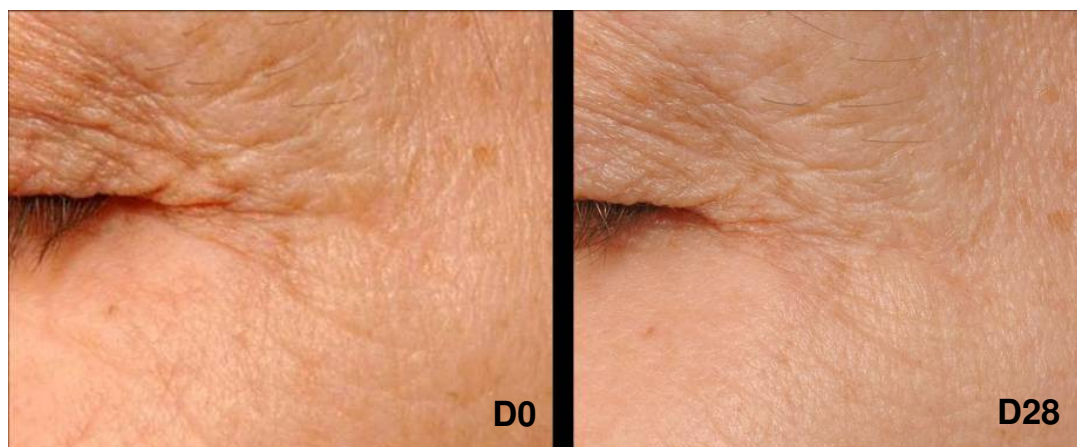


Fig 3 : Dermatological scoring at D1 and D28.

**Anti-ageing effect visible at D28 with GATULINE IN-TENSE 2%**



**Laser profilometry:**  
**Anti-wrinkle effect (%) vs Placebo - D1**

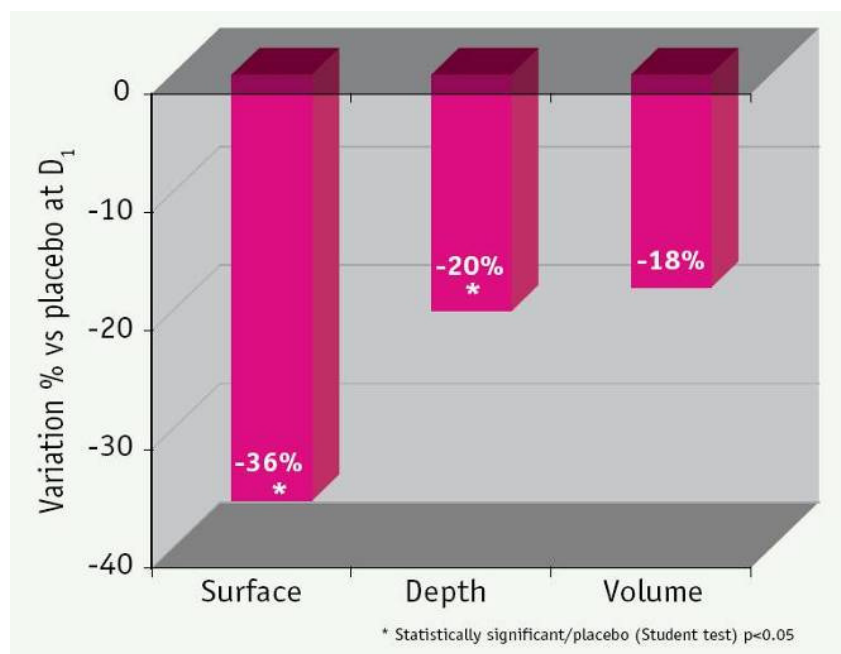


Fig 4 – Wrinkle smoothing effect at D1.

From D1, the results measured by laser profilometry show an improvement in all parameters. The comparison of results on 100% of the placebo panel and of the test shows that, from D1 there is 36% less wrinkled surface with GATULINE IN-TENSE.

**Up to 50% reduction of the wrinkled surface**



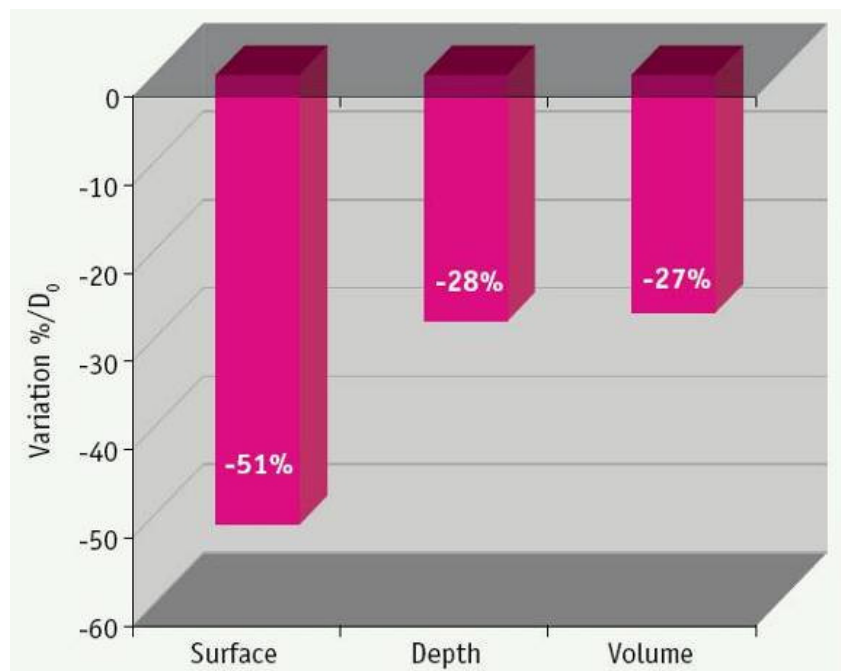


Fig 5 – Wrinkle smoothing effect at D1

At D1, most volunteers show a strong attenuation in wrinkle three-dimensional features. Wrinkle surface may be reduced by up to 51% on the first application.

#### **Anti-wrinkle effect (%) vs Placebo - D28**

After 28 days of treatment with GATULINE IN-TENSE, the three criteria measured (wrinkled surface, depth and volume of wrinkles) show an average reduction of 10% (difference with the placebo-analysis on 100% of volunteers)



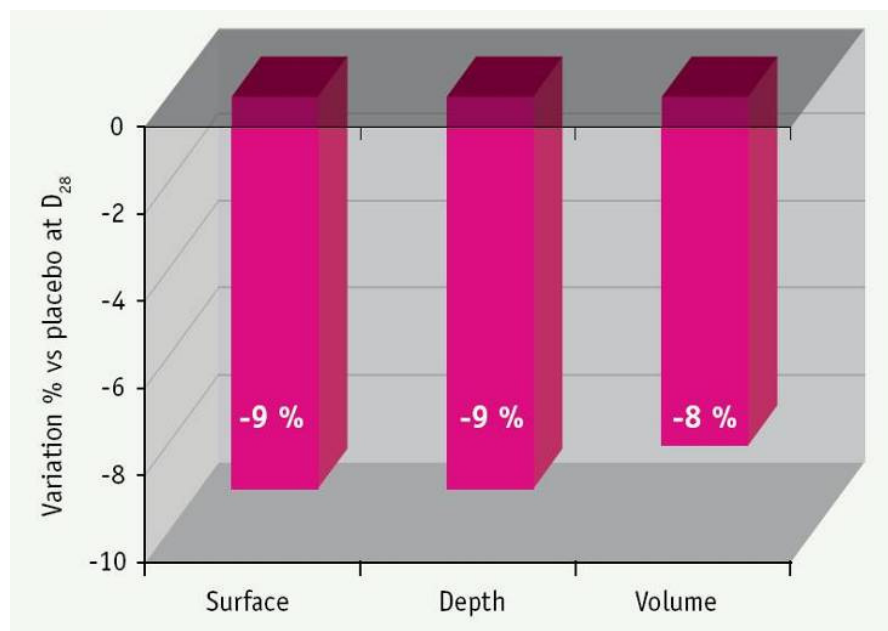


Fig 6 – Wrinkle smoothing effect at D<sub>28</sub>

### The Panelists' opinion

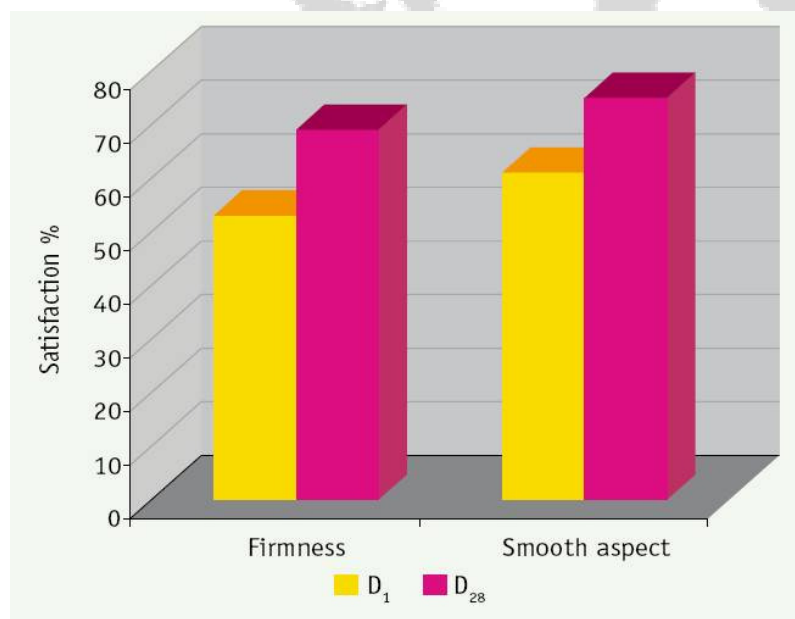


Fig 7 – Self assessment by volunteers of the efficacy of GATULINE IN-TENSE

From the first application, 53 % of volunteers found their skin was firmer and 61% said that their features had been smoothed. And results are improved even more at D28, a sign of GATULINE IN-TENSE long lasting effect.





## **Conclusion**

GATULINE IN-TENSE is an extremely rapid and effective firming ingredient. Its action on the supporting tissue rapidly reorganizes collagen fibers and visibly smoothes the skin.




GATULINE IN-TENSE helps to fade out all wrinkles and reduces the most obvious sign of aging, the creased appearance of the skin.

## **Application**



### **FACIAL CARE**

-  Day and night care
-  Firmness / Density
-  Anti-wrinkle / Surface smoothing
-  Facial contour remodeling

### **BODY CARE**

-  Firming
-  Silhouette (slimming treatment)
-  Restructuring (Anti-stretch mark / post-pregnancy / post-diets)

### **MAKE-UP**

-  Firming foundations
-  Re-plumping lipsticks

## **Formulations**

✿ Facial Contouring Fluid MM8439

✿ Remodeling Mask JB 2253/C

✿ Firming Body Lotion MM 8442/A

*Please try our formulas and feel the difference for yourself or simply call us for even more formulas!*

## **Contact Us Today!**

Whether it is a sales enquiry or a sample request kindly contact us right away:

### **Our sales office**

✿ Tel: 603-6157 5412/3

### **Our Sales Team:**

✿ Eunice Tan (H/P : 016 – 233 5412, email: eunicetan@alliance2u.com)

✿ Jenson Khor (H/P : 016 - 263 5412, email : jensonkhor@alliance2u.com)

✿ Nicholas Mun (H/P : 012-283 5412, email : nickmun@alliance2u.com)

Alternatively you can log on to our official website for more info

**<http://www.alliance2u.com>**